

Hematology  
is in our blood.



 Boule

## **Boule Medical AB** Quintus, Product Introduction

Kenneth Wikner, Marketing Manager

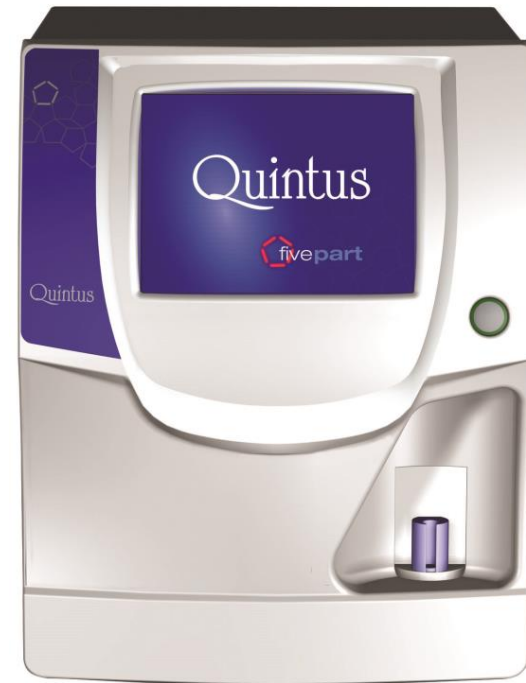
# Quintus

Quintus: Latin (five, fifth)



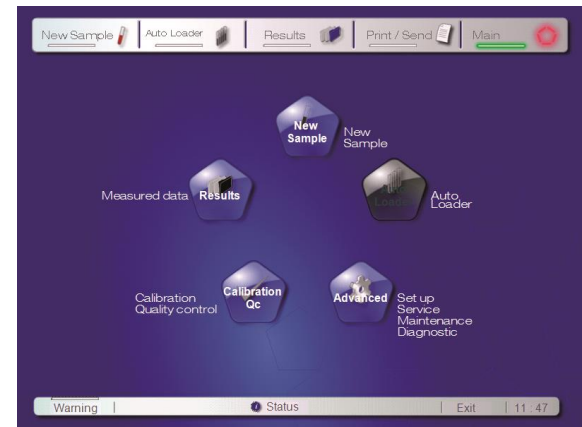
# Quintus

- 24 parameters
- Optical WBC diff method
- 60 samples per hour
- Integrated workstation
- 100.000 sample memory
- Advanced QC program
- Only three reagents needed
- Autoloader as option



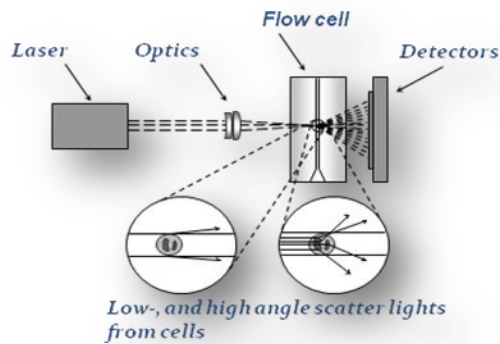
# User Interface

- User friendly interface on a big 10,4 inch color touch screen
- Windows XP based software
- Result bar for quick sample overview
- Zooming function for scatter and histograms



# WBC Differential Method

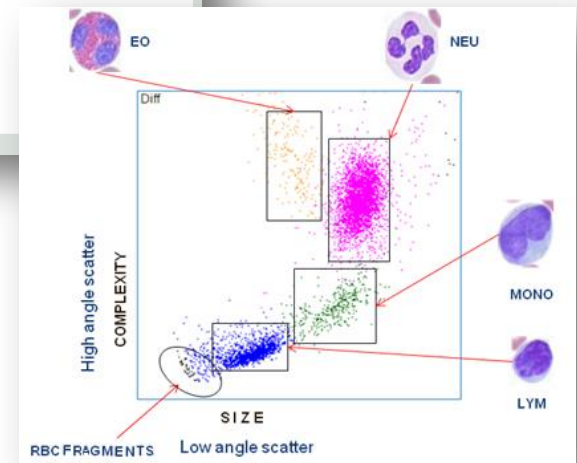
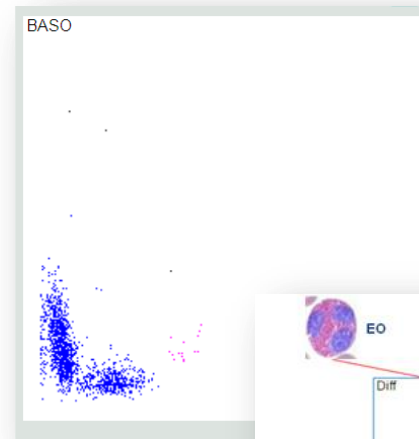
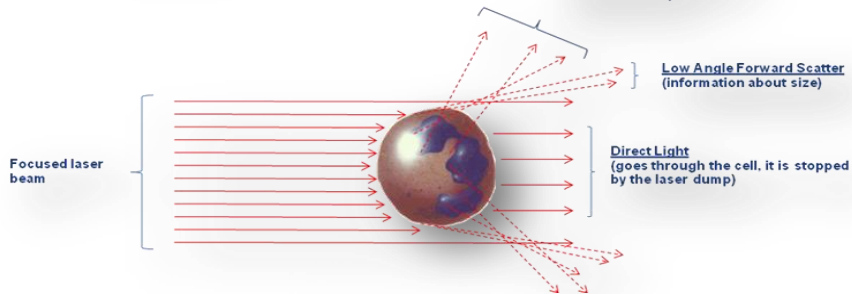
Optical measurement of light scattering and diffraction is used to determine 5 part WBC parameters.



**High Angle Forward Scatter**  
(information about the internal structure)

**Low Angle Forward Scatter**  
(information about size)

**Direct Light**  
(goes through the cell, it is stopped by the laser dump)



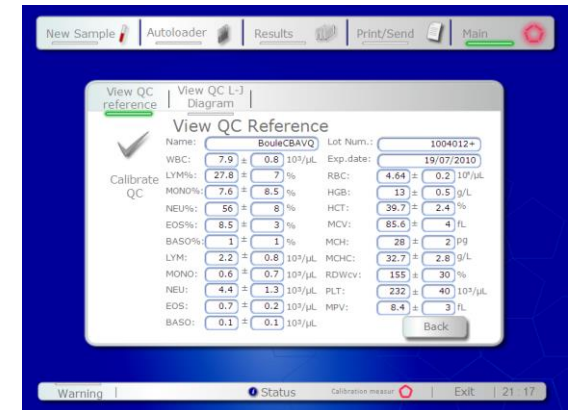
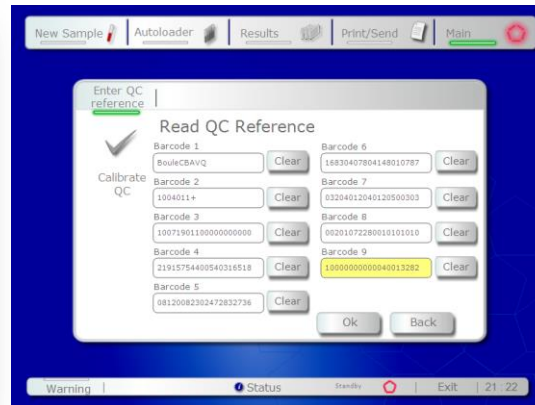
# Autoloader

- Compact Autoloader as an option
- Pre-load up to 100 samples
- Internal barcode scanner for patient ID



# Quality Management

- Bar code entry of control and calibrator assay sheet

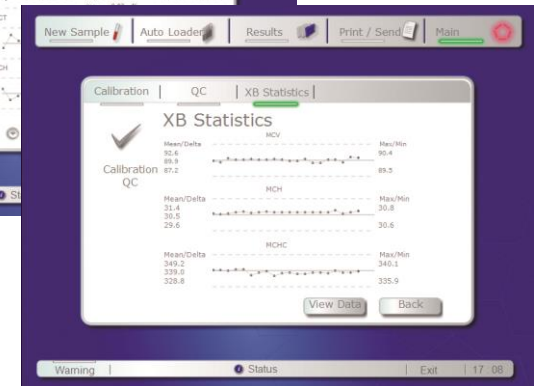
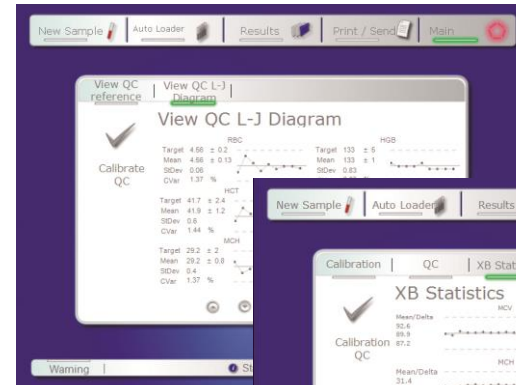
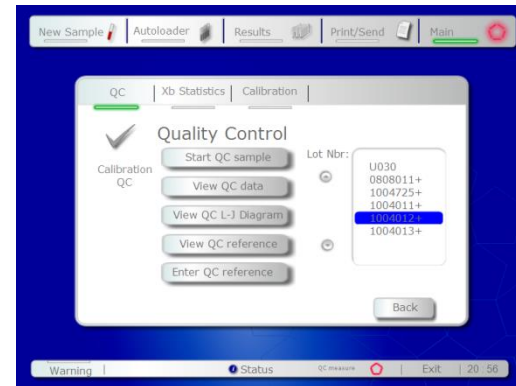


# Quality Management

Easy to run.

Control levels in memory

Advanced QC functions with  
Levey-Jennings and XB plots



# Reagent System

Easy entry of reagents with bar code

Enter New Reagent

Use the barcode reader to scan barcodes from the container or type it manually via keyboard. Before reading textbox must be selected!

Advanced

Diluent: 210069891005101010333800000000143667122 Clear

Lyse-SP: 2100698820311010103330002000000174323450 Clear

Diff-SP: 210069873031101010333000002000109053994 Clear

Keyboard Enter new reagent Back

Warning Status Exit 21:24

Reagent log with lot number, start and stop date, expire date

Reagent Statistics

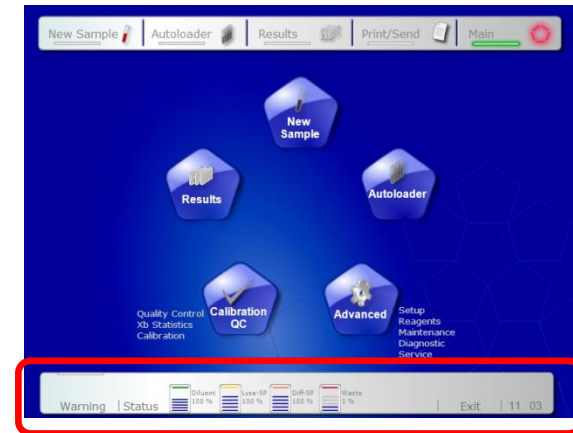
Reagent Type Unique ID	Reagent volume Open date	Lot Nr. Last date	Exp. date
Lyse-SP 2001	5000 02/06/2010	1006988 02/06/2010	10/10/2010
Diff-SP 3001	5000 02/06/2010	1006987 02/06/2010	10/10/2010
Diluent 1001	20000 02/06/2010	1006989 02/06/2010	10/10/2010

Inactivate Back

Warning Status Exit 10:48

# Reagent System

Clear indication of reagent status from Main menu



Waste alarm function for external waste container

